

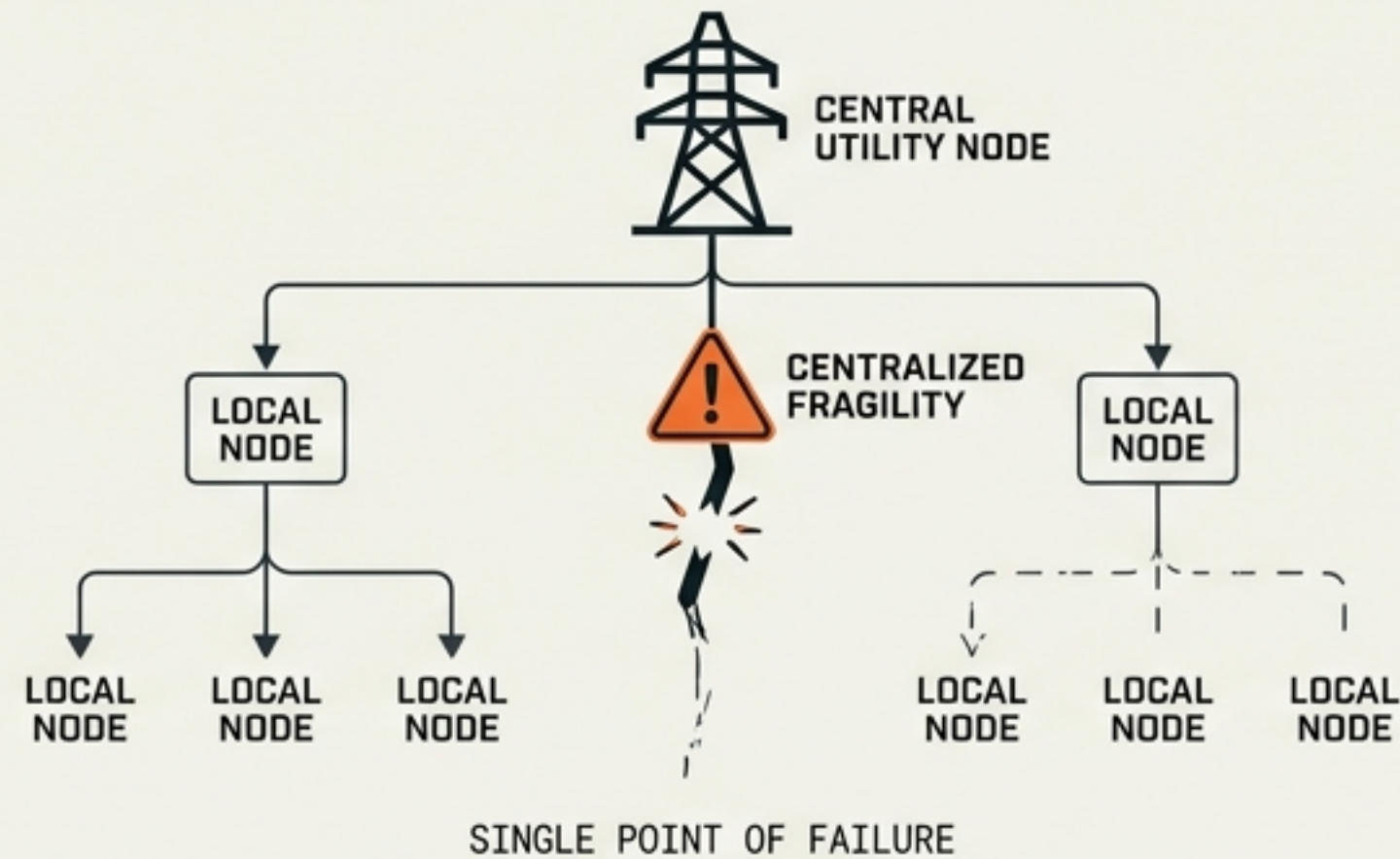
PROJECT SOVEREIGN SCALE

Executing the 2,500-Unit Deployment of
DeReticular Cyber-Physical Infrastructure

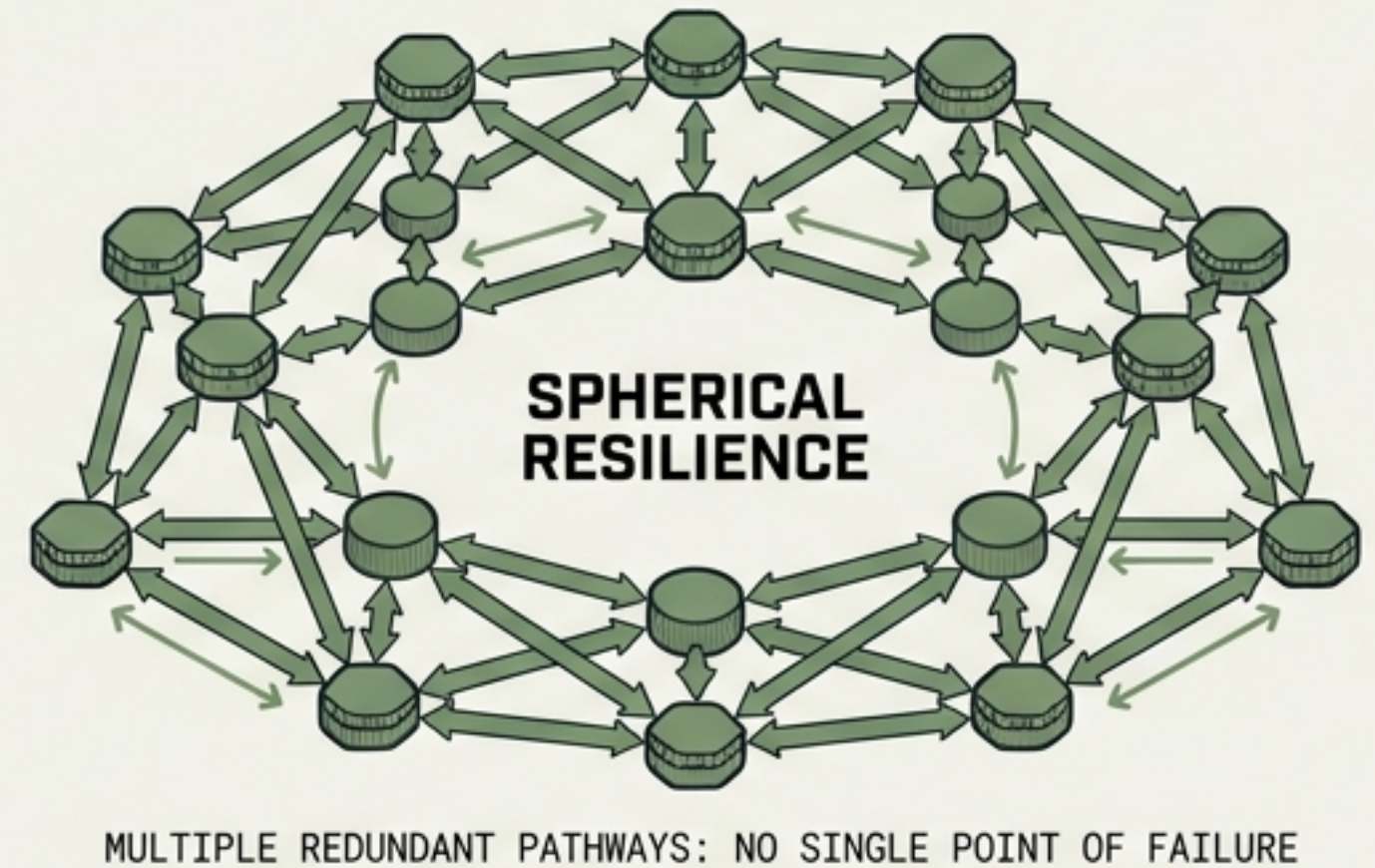
Strategic Business Plan & Ecosystem Dossier | B2B Sales & Partner Distribution

THE DEATH OF THE LINE AND THE BIRTH OF SPHERICAL RESILIENCE

THE LINE



THE SPHERE



Traditional infrastructure relies on centralized, fragile utility grids and Big Tech clouds. DeReticular drives the Decentralized Physical Infrastructure (DePIN) model, enabling communities to generate power, connectivity, and intelligence independently.

Market Context: The DePIN market is projected to reach **\$3.5 Trillion by 2028**, decentralizing autonomous transportation, distributed energy, and the machine-to-machine (M2M) economy.

PROJECT SOVEREIGN SCALE: DEPLOYMENT PARAMETERS

THE OBJECTIVE

2,500 UNITS

Enterprise-scale entry into the DePIN market via a mixed deployment of hardware, establishing the buyer as a regional Sovereign Integrator.

THE CAPITAL

~\$3.7M COST

Estimated Inventory Buy Cost (at 50% margin).
Generates ~\$7.45M Gross Hardware Value.

THE VELOCITY

14 - 22 MONTHS

Estimated time to liquidate via a phased, strategic rollout:
Anchor Projects → MSP Onboarding → RFP Fulfillment.

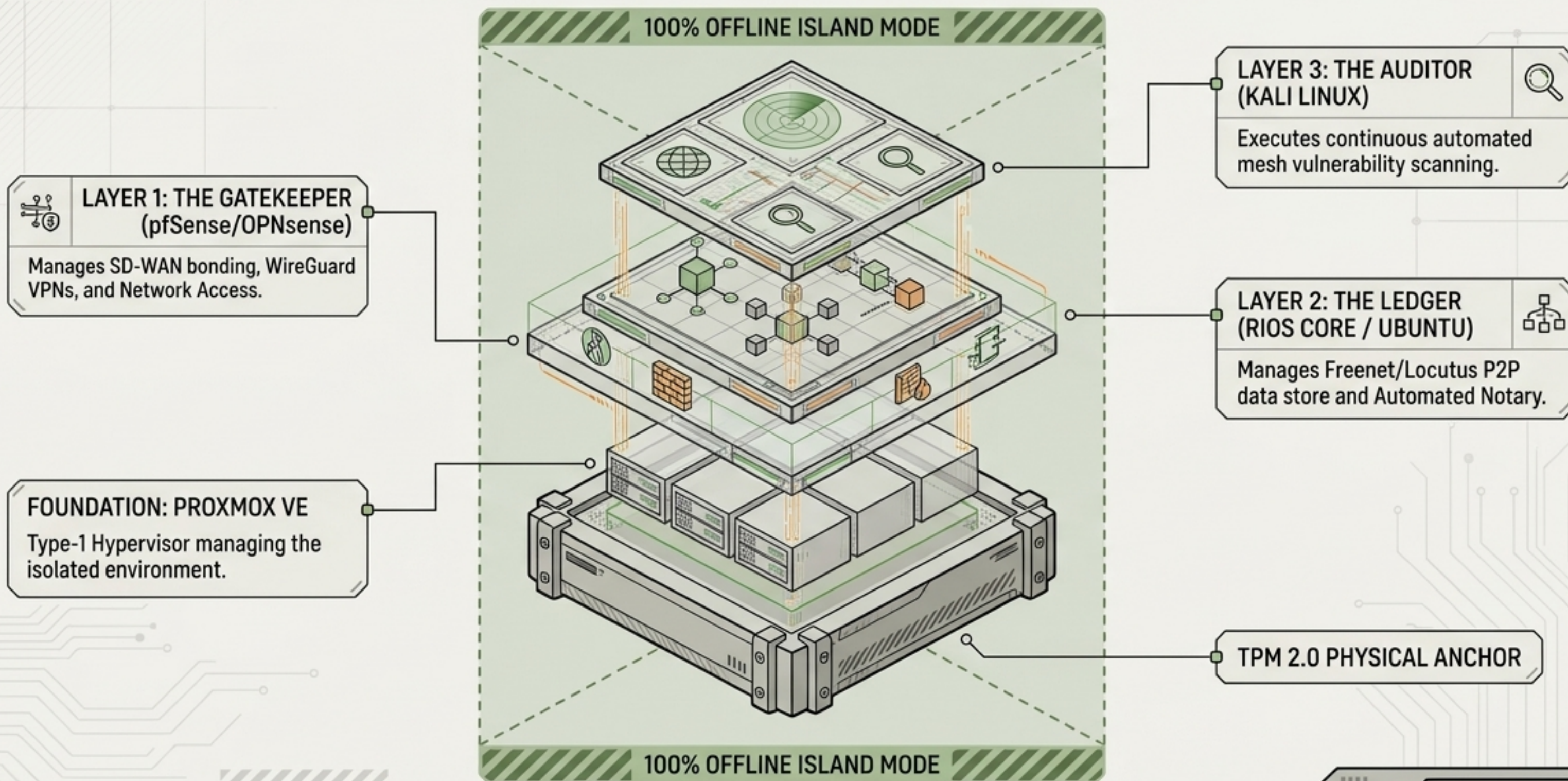
THE 3-YEAR YIELD

\$12.15M POTENTIAL

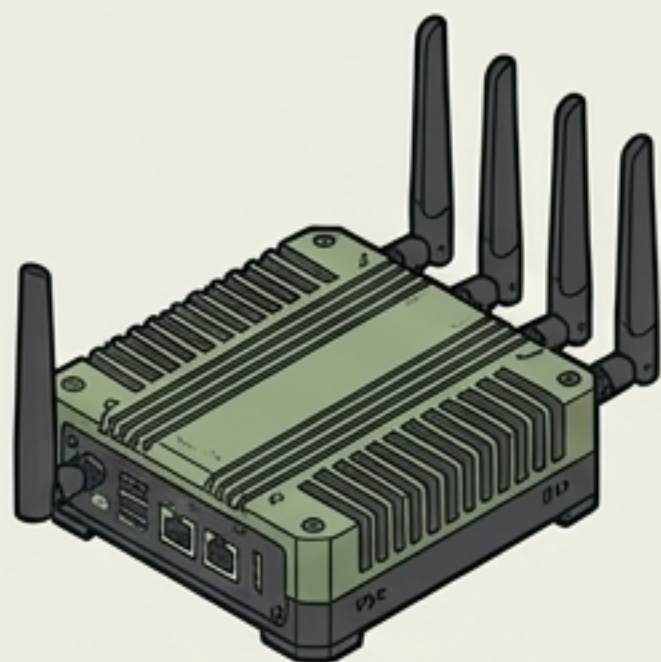
Total project return combining hardware margins, recurring AI license revenue, and high-margin consulting services.

THE RIOS ARCHITECTURE: HYPERCONVERGED AND CLOUD-FREE

Designed for absolute **digital sovereignty**. Processes data locally at the edge, ensuring critical infrastructure survives regional outages.



THE DERETICULAR HARDWARE ARSENAL



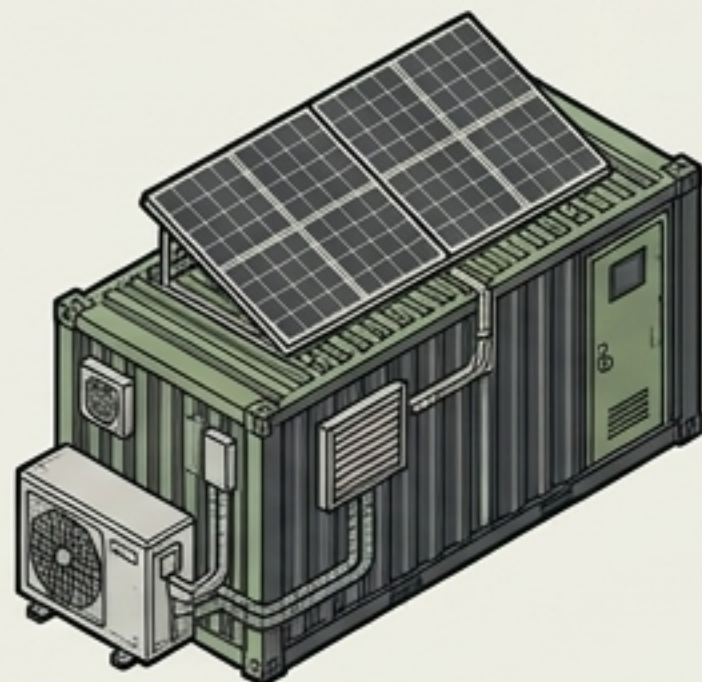
Tier 1: Micro & Mobile Edge

Form Factors:

Telemetry Core, Nomad Link,
Sovereign Sentry

Role: Rugged vehicle telemetry, stationary network gateways, and validating local ledgers.

Price Range: \$249 - \$999



Tier 2: Stationary Backbone

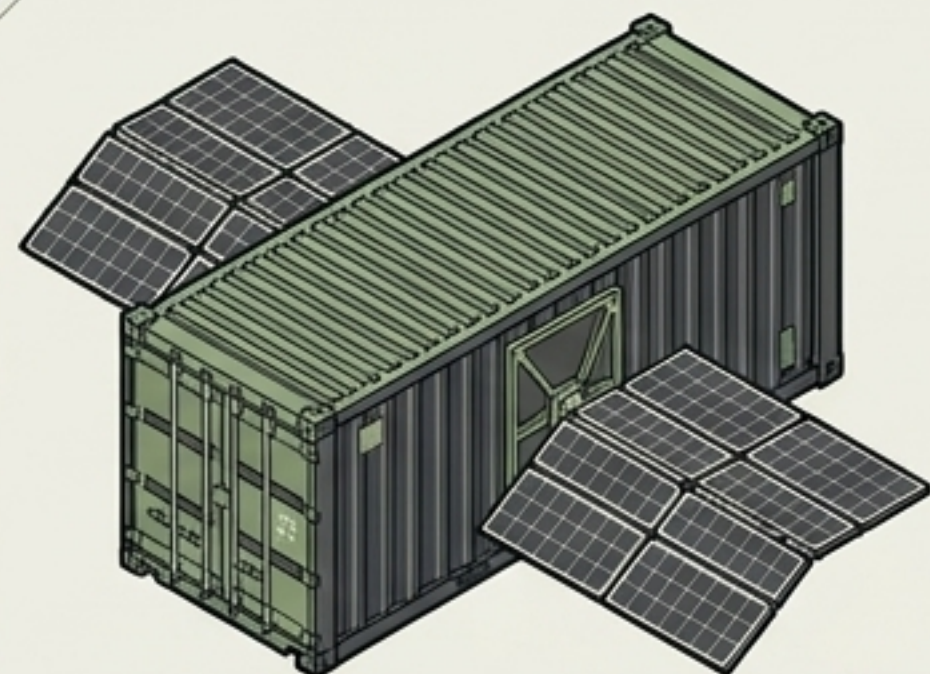
Form Factors:

RIOS Pilot Standard (10ft ISO Container)

Role: Permanent off-grid basecamps and agricultural/mining edge hubs.

Specs: 4.4kW Solar, 20kWh LiFePO4, Active HVAC, Xeon Scalable, NVIDIA A2 GPU,

Price Range: ~\$78,500



Tier 3: Macro Infrastructure

Form Factors:

RIOS Pilot AI Core (20ft ISO Container)

Role: Heavy off-grid LLM model training and scientific simulation.

Specs: 15kW Deployable Solar Wings, Novec 1230 suppression, Dual Xeon Platinum, NVIDIA A100 (80GB).


Price Range: \$185,000+

SOVEREIGN INTELLIGENCE: CLOUD-FREE 'BLUE COLLAR AI'

The **OpenClaw** framework runs Llama-3-8B and Vision-Language Models locally on NVIDIA hardware, requiring zero external data transmission.

PERSONNEL FILE ID

The Industrial Foreman | \$299/mo



Speaks industrial protocols (RS485/CAN bus) via **Node-RED** to manage **solar inverters**, **battery banks**, and **GPS logs**.

PERSONNEL FILE ID

The DevOps Sovereign | \$499/mo



'**Deep Admin**' auto-diagnosing **network drops**. Analyzes **SystemD server logs** and **autonomously repairs** via SSH.

PERSONNEL FILE ID

The Sovereign Executive | \$199/mo



Zero-trust administrative assistant managing **voice-to-text CRM** and **local OCR** via **air-gapped** Vector DBs (RAG).

PERSONNEL FILE ID

The Field Medic | \$1,299/mo

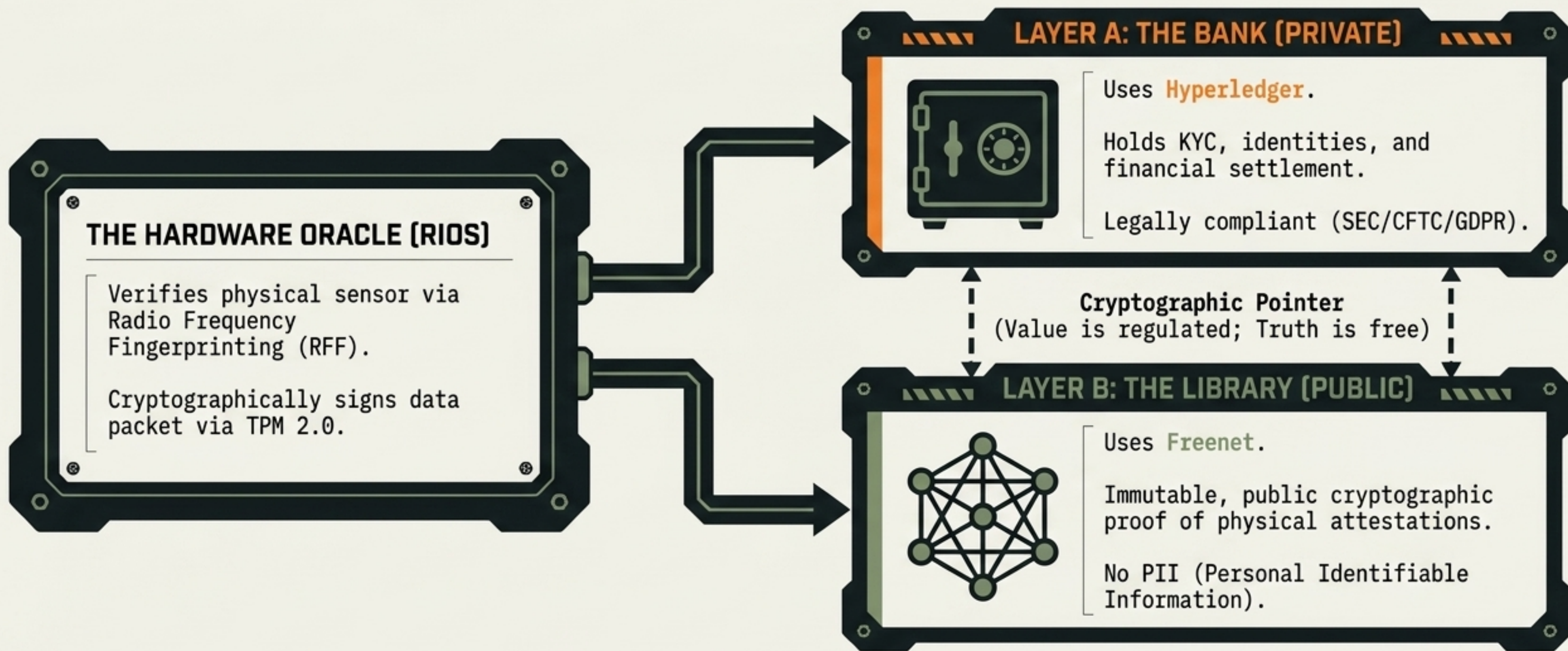


Vision-Language Model (VLM). Technicians use it to **visually identify** broken legacy parts and **synthesize repair guides offline**.

DATA GOVERNANCE: THE SPLIT-LEDGER ARCHITECTURE

Solving the “Privacy Paradox” for Trustless Commodities.

Financial tokens contain cryptographic pointers to immutable physical proofs.



DEPLOYMENT TARGETS: FOUR BLUE OCEAN VERTICALS

THE SMALL CITY NEXUS



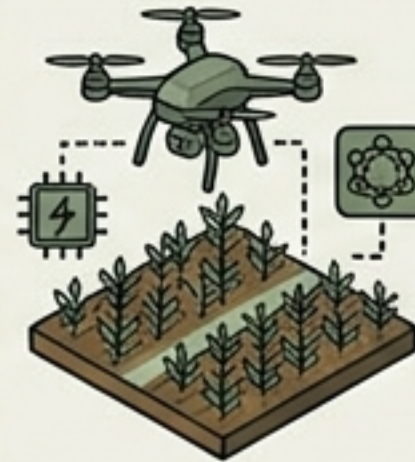
TARGET: Rural Mayors

SOLUTION:

Sentry / Municipal Citadel

ANGLE: Replaces Big Tech dependencies with self-healing, air-gapped municipal intranets.

PRECISION AG & ESG



TARGET: Large-scale Farms / Ag-Co-ops

SOLUTION:

Agronomist Agent + Microgrid

ANGLE: Generate verified "Trustless" ESG carbon credits without surrendering data to Big Ag.

DEFENSE & CONTESTED LOGISTICS



TARGET: DoD Contractors / NGOs

SOLUTION: Pilot Expeditionary + Sovereign Forge

ANGLE: "Civilization in a Suitcase." On-site AI vision monitoring for 3D printed aerospace parts.

MARITIME & HOSPITALITY



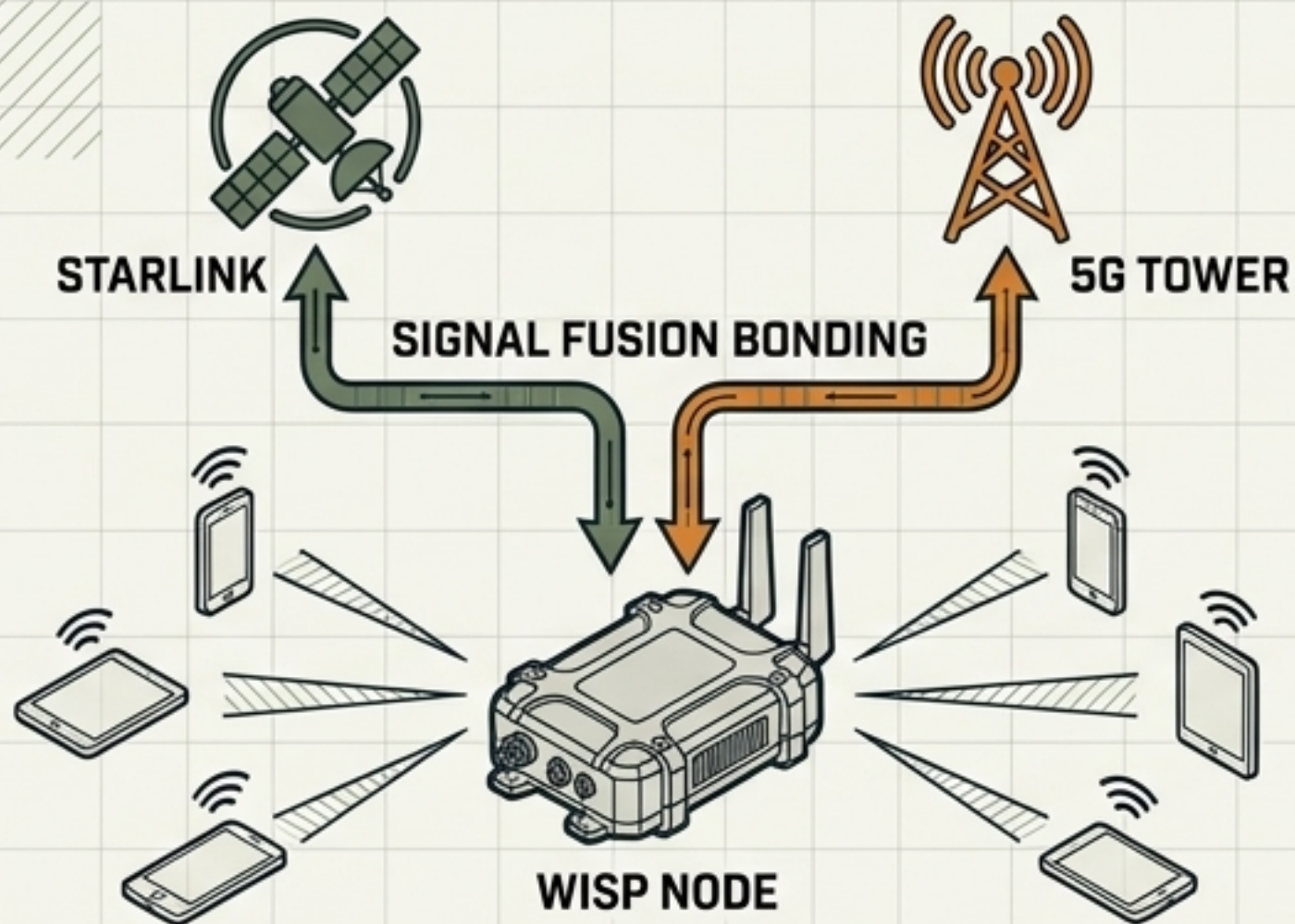
TARGET: Eco-Resorts / Marinas

SOLUTION: WISP Kit + Sentry Pro

ANGLE: Autonomous LiDAR loss-prevention and monetization of Starlink bandwidth for guests.

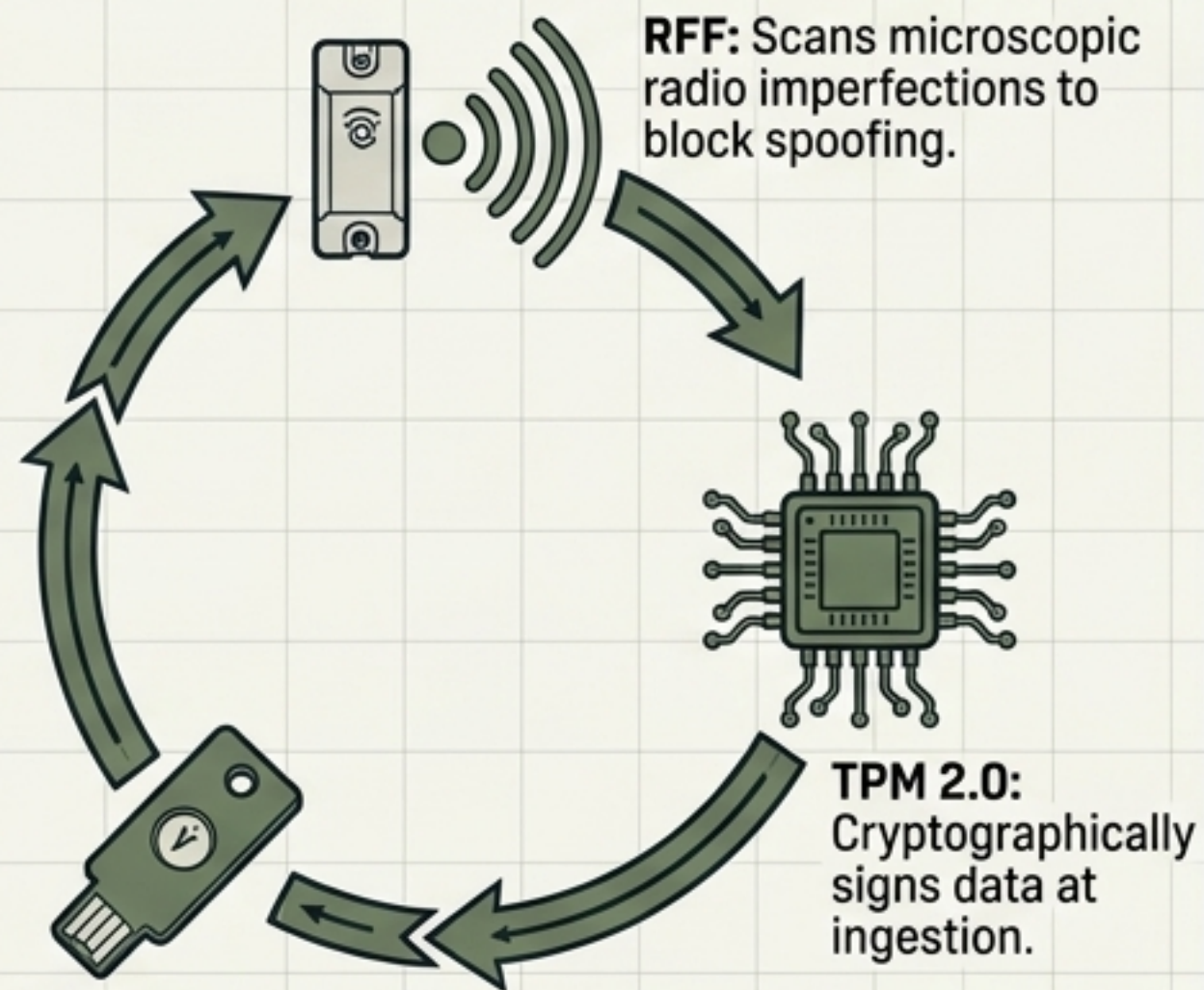
AUTONOMOUS REVENUE & THE HARDWARE ROOT OF TRUST

SOVEREIGN WISP (WISP-IN-A-BOX)



- Acts as an autonomous micro-ISP, utilizing a Captive Portal to sell localized Wi-Fi bandwidth at \$5.00/GB.
- Profit is split 50/50 between the Operator and DeReticular via Smart Contracts.

VERIFICATION LOOP (ELIMINATING GARBAGE IN)

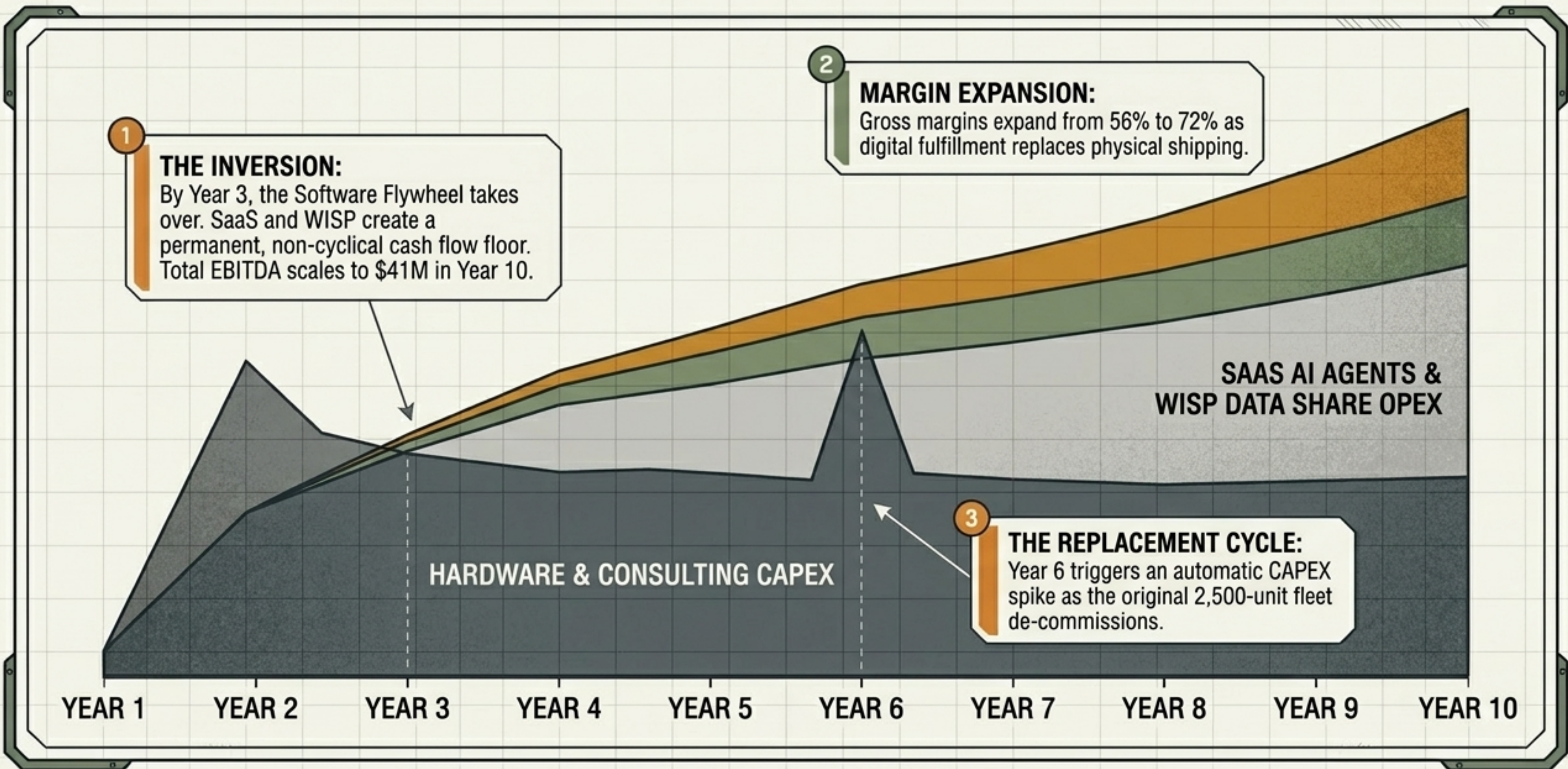


SOVEREIGN KEY:
Destructive/Admin commands require human presence and physical authentication.

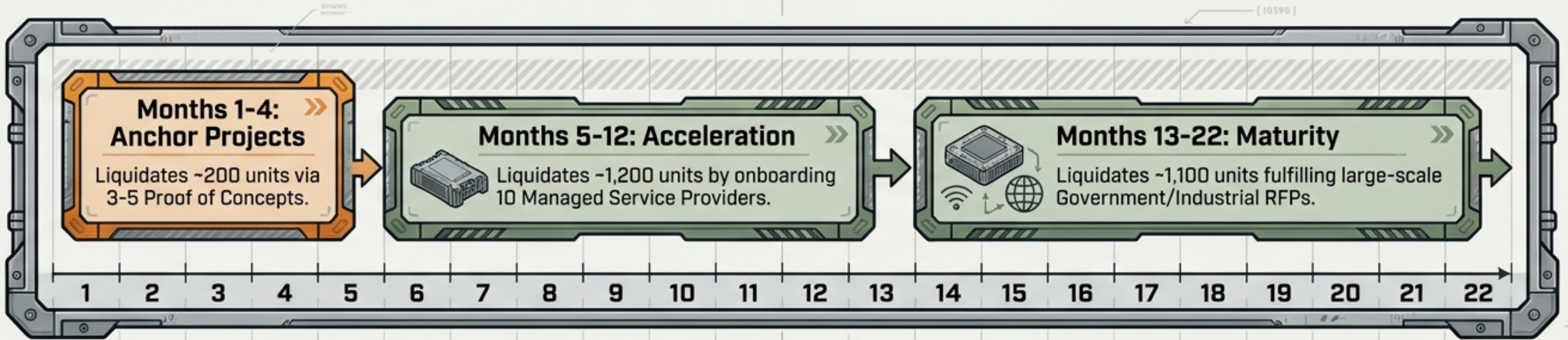
RFF: Scans microscopic radio imperfections to block spoofing.

TPM 2.0:
Cryptographically signs data at ingestion.

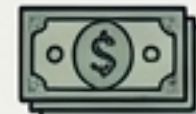


FINANCIAL TRAJECTORY: THE REVENUE INVERSION



LIQUIDATION VELOCITY & THE CONSULTING MULTIPLIER



THE CONSULTING MULTIPLIER (\$3M+ UPSELL)

 **\$1 Hardware Sold**  **Generates \$0.40 to \$0.60 in Consulting** 

Topology Mapping
(\$15k-\$50k per city)



Hardware Brainwashing
(\$5k-\$20k per installation)



SLA Validation & Regulatory Audits



RISK MITIGATION & EXECUTION PROTOCOL

RISK REGISTER

RISK	MITIGATION
Technology Maturity (Alpha Tech)	Deploy Digital Twin strategy utilizing centralized backups for 18 months.
Regulatory Overreach (SEC/CFTC)	Split-Ledger isolates financial identity inside legally compliant zones.
Supply Chain (GPU Shortages)	Hardware upcycling pivot to Mac Mini M4 nodes .

LAUNCH CHECKLIST

- 1. EXECUTE MOU:** Sign Master Distribution Agreement.
- 2. NODE 2 ACCESS:** Pull OpenClaw images from Canada Brain Node.
- 3. MINT SOVEREIGN KEYS:** Order batch of 500 white-label **YubiKeys**.
- 4. THE TROJAN HORSE LAUNCH:** Deploy Nomad Kits to instantly solve IT pain → points, paving the way for macro sales.